

Manual Retractable Fittings



SensoGate® WA 131 MH

Manual retractable fitting with easy to operate rotary drive for sanitary applications

Revolutionary operation

The SensoGate® WA 131 MH has a manual rotary drive, which enables the fitting to be operated up to a counter pressure of 145 psi (10 bar) – and this in less than two rotations. Regardless of how unfavorable the angle or the operating height at which the fitting is installed. Little rotary force is required and is easily applied manually. This is not possible with the sliding motion of conventional retractable fittings.

Multiple sanitary process fittings are available with the SensoGate WA 131 MH.

Maximum process safety

The configuration of the O-rings means that there is never any connection between the drain opening of the cleaning chamber and the process, even during inward and outward movement of the sensor.

For maximum process safety, the sensor can only be removed in the service position. Automatic insertion protection reliably blocks the movement of the fitting and prevents extension into the process position without a sensor.

Facts

- EHEDG-certified for all process-wetted parts incl. rinsing/calibration chamber
- Directed flow rinses the process seal from the process side as well as from the inside of the fitting
- Cyclone cleaning effect
- Double gaskets with leakage bores prevent microbial contamination of the drive
- Broad applications in sanitary conditions
- Process-wetted parts: 316 stainless steel, electropolished
- SIP and CIP compatible in process
- SIP and CIP of calibration chamber and cleaning connections
- Fast and easy replacement of calibration chamber and insertion tube
- All maintenance can be performed on site
- Superior sensor immersion depth
- Standard sensor length (225 mm) even for large immersion depths
- Multiple process connections available
- Modular design
- Special version for sensors with pressurized liquid electrolyte
- Low cost, simple installation, operation, and maintenance
- Protective cleaning of seals for long service life
- SensoLock for high operational safety
- Integrated limit switches

Specifications

Permissible process pressure and temperature during movement

145 psi (10 bar) (at 32 ... 284°F 0 ... 140°C))

Permissible process pressure and temperature, statically in service position

232 psi (16 bar) (at 32 ... 104°F (0 ... 40°C))

Ambient temperature

14 ... 158°F (−10 ... 70°C)

Ingress protection

IP 66

Housing material

stainless steel A2

Permissible pressure for probe control

58 ... 101 psi (4 ... 7 bar)

Sensors

With gel electrolyte

Ø 12 mm, length 225 mm with temp detector, Pg 13.5 thread

With liquid electrolyte

Ø 12 mm, length 250 mm with temp detector

Process adaptations

Dairy pipe, DIN 11851

DN 50 to 100

Ingold socket, 25 mm

25 mm

Clamp 316 SS

clamp 1" to 3.5"

Varivent 316 SS

for pipes from DN 50, from DN 65 short, from DN 80 long

BioControl 316 SS

size 50/65

Connections

Rinse and calibration media (optional)

internal thread G1/8", hose coupling G1/8"-DN 4/6

Outlet (optional)

outlet hose, NW 8 EPDM 3m

For pressurized sensors

hose connection NW 6, pressure in sensor chamber
7.2 ... 14.5 psi (0.5 ... 1 bar) above process pressure (max. 101 psi (7 bar))

Immersion depths/
Installation dimensions

see dimensional drawings

Process-wetted materials

see order code

Manual Retractable Fittings

SensoGate® WA 131 MH for sanitary applications

Product Line

Order No.

Sanitary Sensor Lock-Gate, Manual		WA 131 MH /	<input type="checkbox"/>	<input type="checkbox"/>	<input type="checkbox"/>	<input type="checkbox"/>	<input type="checkbox"/>	<input type="checkbox"/>	<input type="checkbox"/>	<input type="checkbox"/>	<input type="checkbox"/>	<input type="checkbox"/>	<input type="checkbox"/>	<input type="checkbox"/>	<input type="checkbox"/>	<input type="checkbox"/>	<input type="checkbox"/>	<input type="checkbox"/>	<input type="checkbox"/>
Explosion protection	for hazardous area Zone 1 without	X N																	
Sensor	gel electrolyte liquid electrolyte (pressurization possible)	0 1																	
Gasket material	set F – FKM FDA set E – EPDM FDA set G – FFKM FDA process-wetted set H – FFKM FDA complete	F E G H																	
Process-wetted materials*)	316 SS/316 SS/316 SS (electropolished)	G																	
Process adaptation	dairy pipe, DN 50	C 1																	
	dairy pipe, DN 65	C 2																	
	dairy pipe, DN 80	C 3																	
	Ingold socket, 316 SS, 25 mm (G 1 1/4")	H 0 A																	
	Ingold socket, sanitary, 316 SS, 25 mm (G 1 1/4")	H 1 A																	
	clamp 1.5", 316 SS	J 1 A																	
	clamp 2", 316 SS	J 2																	
	clamp 2.5", 316 SS	J 3																	
	clamp 3", 316 SS	J 4																	
	clamp 3.5", 316 SS	J 5																	
	Varivent, 316 SS (from DN 50)	V 1 A																	
	Varivent, 316 SS (from DN 50 short, from DN 80 long)	V 2																	
	BioControl, DN 50	L 1 A																	
	BioControl, DN 65	L 2 A																	
Immersion depth	short long	A B																	
Electrical limit signal	without with	A B																	
Rinse-medium connection	G 1/8" complete with outlet hose (3 m) G 1/8" complete with outlet hose (3 m), inlet G 1/8" G 1/8" complete with outlet hose (3 m), inlet G 1/8" and inlet hose (5 m) complete with coupling nut	0 1 2																	
Housing material	stainless steel / PP (< 6 bars operating pressure) stainless steel / PEEK (< 10 bars operating pressure)	1 2																	
Special variant	without equipped with special grease (provided by customer)																0 0	0 0	0 1

*) Material combinations: Process-wetted part of calibration chamber/rinse-wetted part of calibration chamber/immersion tube

Accessories

Order No.

Service set	basic equipment	ZU 0680
	maintenance, repair, retrofit	ZU 0740
	calibration chamber	ZU 0754
Sensor mounting wrench, 19 mm		ZU 0647
Mounting aid	for 20 x 2.5 O-rings	ZU 0747
	for scraper ring	ZU 0746
Bellows (version for liquid electrolyte sensors)		ZU 0739
Protective cap (version for sensors with polymeric electrolyte)		ZU 0759
Material Certificate 3.1		ZU 0708
Air supply	for pressurized sensors, 7 ... 58 psi (0.5 ... 4 bar)	ZU 0670/1
	for pressurized sensors, 14.5 ... 101 psi (1 ... 7 bar)	ZU 0670/2
Hose, 20 m (extension for ZU 0670)		ZU 0713
Safety weld-in socket, straight, 40 mm	for tank wall	ZU 0717
	for pipe, DN 50	ZU 0717/DN50
	for pipe, DN 65	ZU 0717/DN65
	for pipe, DN 80	ZU 0717/DN80
	for pipe, DN 100	ZU 0717/DN100
Safety weld-in socket, beveled, 15°, 40 mm	for tank wall	ZU 0718
	for pipe, DN 50	ZU 0718/DN50
	for pipe, DN 65	ZU 0718/DN65
	for pipe, DN 80	ZU 0718/DN80
	for pipe, DN 100	ZU 0718/DN100
Retainer clamp for 25 mm socket		ZU 0818

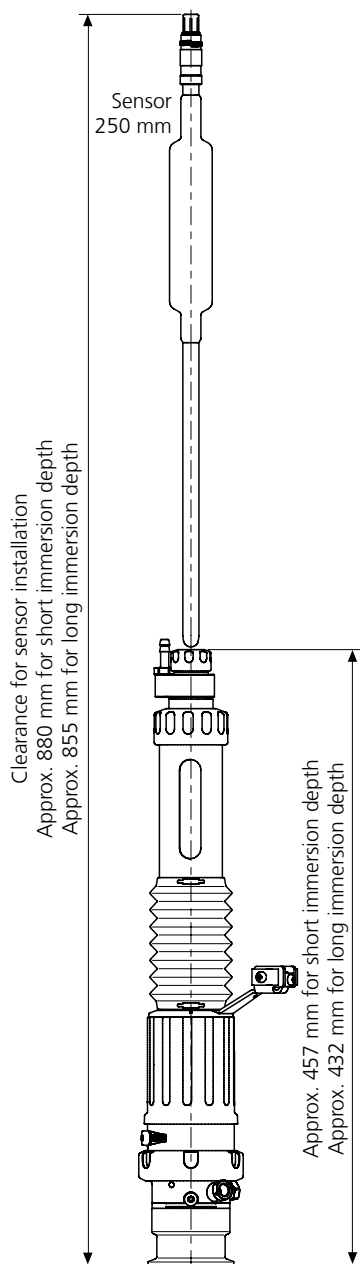
Manual Retractable Fittings

SensoGate® WA 131 MH for sanitary applications

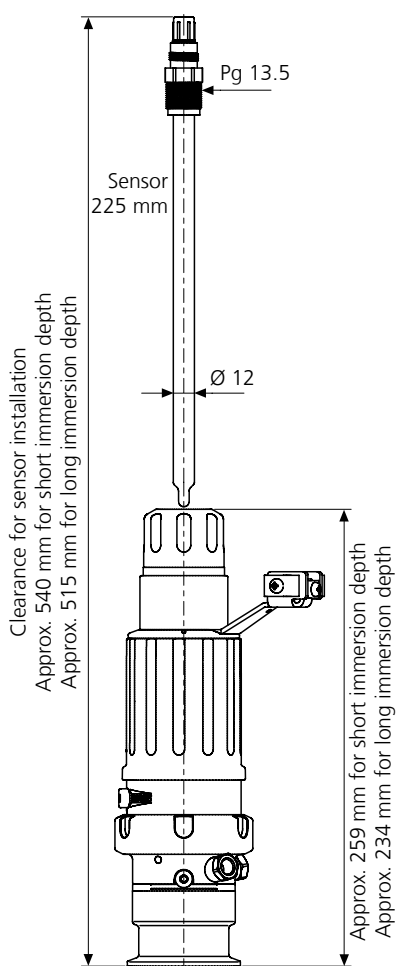
Gaskets	Set	Contact (process/rinse medium)	Order No.
Dairy pipe, Varivent, clamp	E/1	EPDM FDA	ZU 0700/1
	E/2	EPDM FDA/EPDM FDA	ZU 0841
	F/1	FKM FDA	ZU 0697/1
	F/2	FKM FDA/FKM FDA	ZU 0842
	G/1	FFKM FDA	ZU 0766/1
	G/2	FFKM FDA/EPDM FDA	ZU 0843
	H/2	FFKM FDA/FFKM FDA	ZU 0844
Ingold socket H0	E/1	EPDM FDA	ZU 0704/1
	E/2	EPDM FDA/EPDM FDA	ZU 0845
	F/1	FKM FDA	ZU 0703/1
	F/2	FKM FDA/FKM FDA	ZU 0846
	G/1	FFKM FDA	ZU 0768/1
	G/2	FFKM FDA/EPDM FDA	ZU 0847
	H/2	FFKM FDA/FFKM FDA	ZU 0848
Ingold socket H1	E/1	EPDM FDA	ZU 0704/1
	E/2	EPDM FDA/EPDM FDA	ZU 0849
	F/1	FKM FDA	ZU 0703/1
	F/2	FKM FDA/FKM FDA	ZU 0850
	G/1	FFKM FDA	ZU 0768/1
	G/2	FFKM FDA/EPDM FDA	ZU 0851
	H/2	FFKM FDA/FFKM FDA	ZU 0848
Spare Parts			Order No.
Immersion tube	316 SS		ZU 0764

Dimensional Drawings

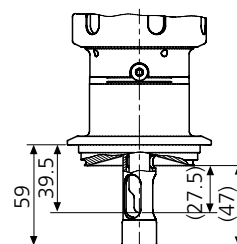
Installation dimensions
for SensoGate® WA 131 MH
for sensors with liquid electrolyte



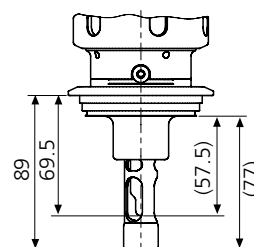
Installation dimensions
for SensoGate® WA 131 MH
for sensors with gel electrolyte



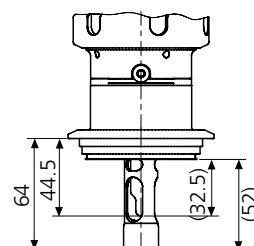
SensoGate® WA 131 MH
Process adaptation for Varivent DN 50,
short immersion depth



SensoGate® WA 131 MH
Process adaptation for Varivent from
DN 80, long immersion depth



SensoGate® WA 131 MH
Process adaptation for Varivent from
DN 65, short immersion depth

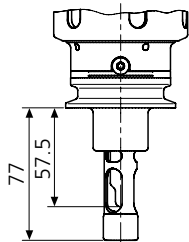


Manual Retractable Fittings

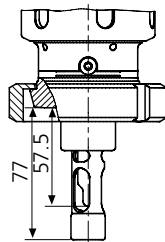
SensoGate® WA 131 MH for sanitary applications

Dimensional Drawings – continued

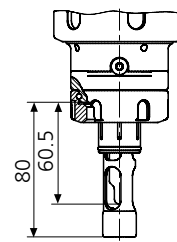
SensoGate® WA 131 MH
Process adaptation for
Triclamp 2" ... 3.5",
long immersion depth



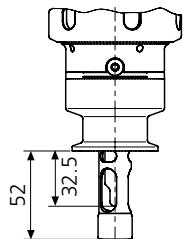
SensoGate® WA 131 MH
Process adaptation for dairy pipe
DN 11851 DN 50 ... DN 100,
long immersion depth



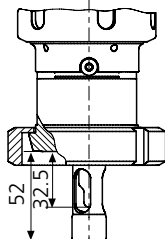
SensoGate® WA 131 MH
Process adaptation for
Ingold socket, 25 mm



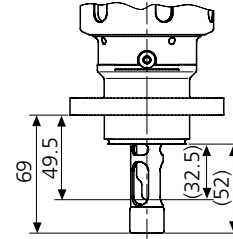
SensoGate® WA 131 MH
Process adaptation for
Triclamp 1" ... 3.5",
short immersion depth



SensoGate® WA 131 MH
Process adaptation for dairy pipe
DN 11851 DN 50 ... DN 100,
short immersion depth



SensoGate® WA 131 MH
Process adaptation for
BioControl DN 50/DN 65



For up-to-date information, please visit www.m4knick.com

M4Knick >