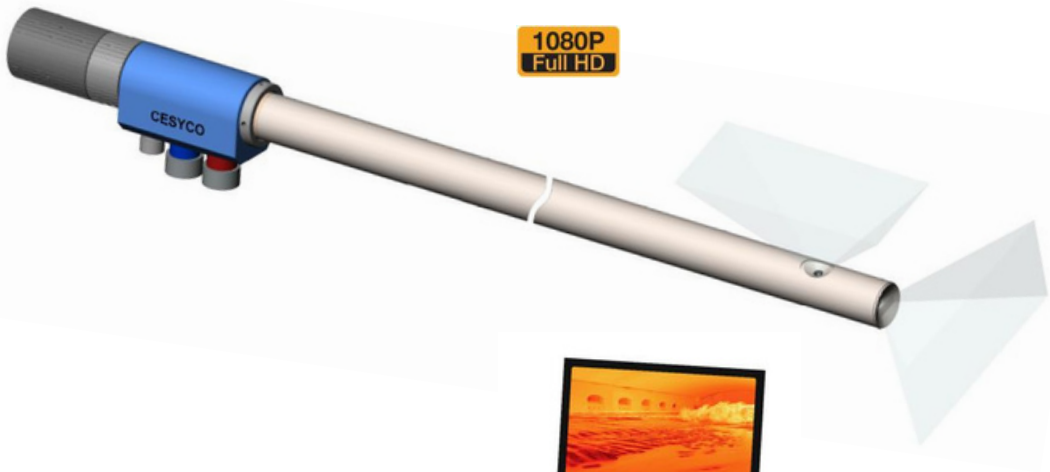


PRODUCT FILE

The control box is equipped with a display of temperature to verify proper endoscope cooling in critical environments.



1080P  
Full HD



Allows the rotation of the water jacket without rotating the hoses.

The HTN40M is a multi-view digital video endoscope that allows you to view multiple areas simultaneously. It is rather aimed for inspections of high temperature furnaces where the light is high. Its small diameter, its lightness and the fact that it is extremely handy allow it to use it as a portable endoscope; however, it can be used as a stationary endoscope. The HTN40M offers high-quality images thanks to Full HD video cameras integrated into the cooling jacket. The furnace can only be observed using the digital video module, which allows all images to be viewed simultaneously on a computer or tablet. With its water and air-cooled housing, the HTN40M videoscope can operate in furnaces with temperatures up to 1600°C. The HTN40M multi-view(axial/lateral) videoscope is available in several lengths.

Options

The **directions of vision** can be 2 or 3 in number and placed so as to independent on the jacket



**Field of view** available for each direction of vision



**Field of view** : angle representing the surface of the monitored area. Bigger is the angle, more panoramic is the vision.

HTN40M

Video Furnace Borescope | Multi-Vision

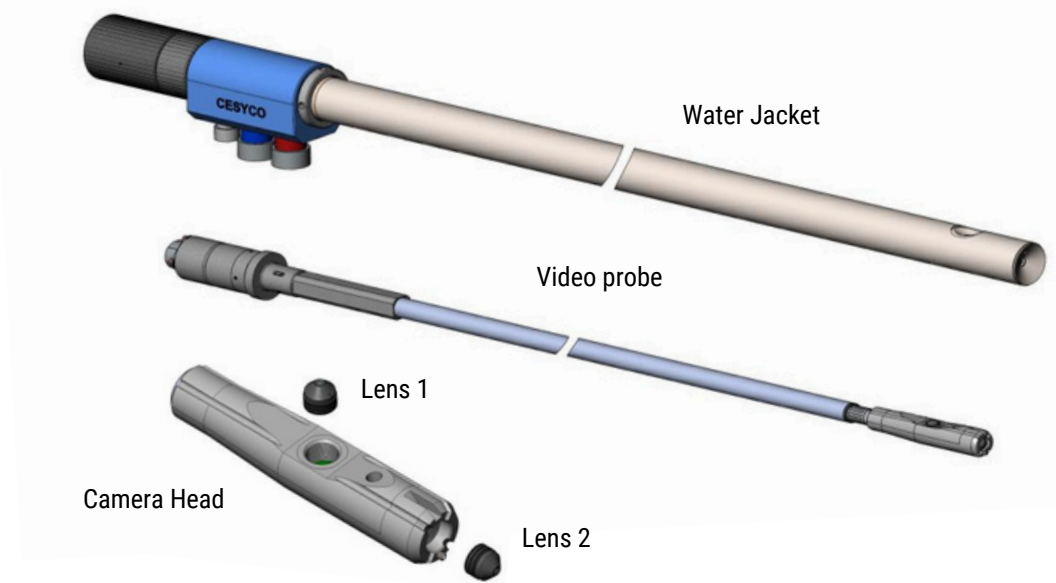
Ø 40 mm

High temperature borescopes | design, production, sales and services on site

1600°C

 **Fiberscope**<sup>net</sup>

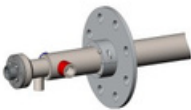
The insertion probe is made up of the following elements:



This endoscope must be used with its electrical box and/or with one of the accessories below.

ACCESSORIES / OPTIONS

Clamping flange



Electric Station



Control Station



Technologies	Image transmission	Digital IP video
	Cooling system	Triple jacket
Using temperature	From 750°C to 1,600°C	
Dimensions	Diameter	40mm
	Lenght	500mm to 4,000mm
	Weight	7kg to 15kg
Cooling system	Water	Loop System
	Air	Lost
Air and water distributor	Revolving	Free on 360°
Inner digital IP camera FullHD	Effective Pixels	1920x1080
	Resolution	1080p
DOV	Axial & Lateral	0°+ 90°+ 270°
FOV	Interchangeable	D 60° => H53° x V30°
		D 105° => H91° x V45°
Focus	Adjusting Tool	From 10cm to Infinity
Connections	Inlet / Outlet	Water: BSP 1/2"
		Air: BSP 3/8"
Power supply	Electric Station	100 to 250 VAC, 50/60 Hz
		Video Output: RJ45
Accessories	Control and security	Clamping Flange
		Control Station
		Electric Station