

Pixellot Air

Before and After the Game Guide



HOME

Pixellot
AUTOMATIC PRODUCTION

V2.0

TABLE OF CONTENTS

SECTION 1: PREPARATION BEFORE THE GAME

System Components 3-8

Unboxing and Preparation for First Use ...9-22

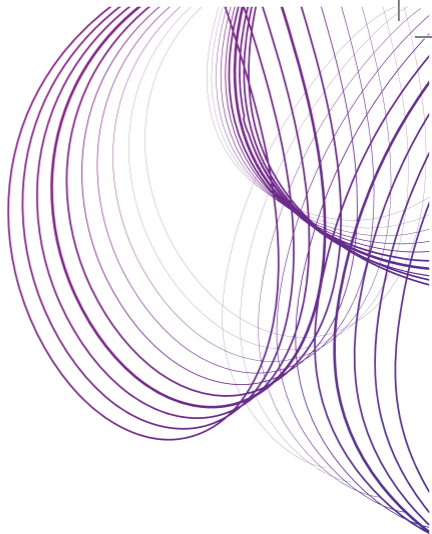
SECTION 2: UPLOADING AFTER THE GAME

Uploading Your Game 23-25

Viewing Your Videos26-27



Watch our videos



SECTION 1: PREPARATION BEFORE THE GAME



SYSTEM COMPONENTS



Pixellot Control App

Download the Pixellot Control Mobile App to operate the device



The Pixellot Control App enables you to



Live view your camera's sight



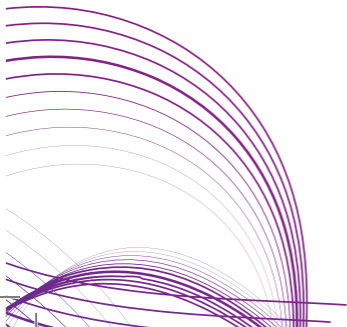
Start/Stop recording your game



Upload your game for processing

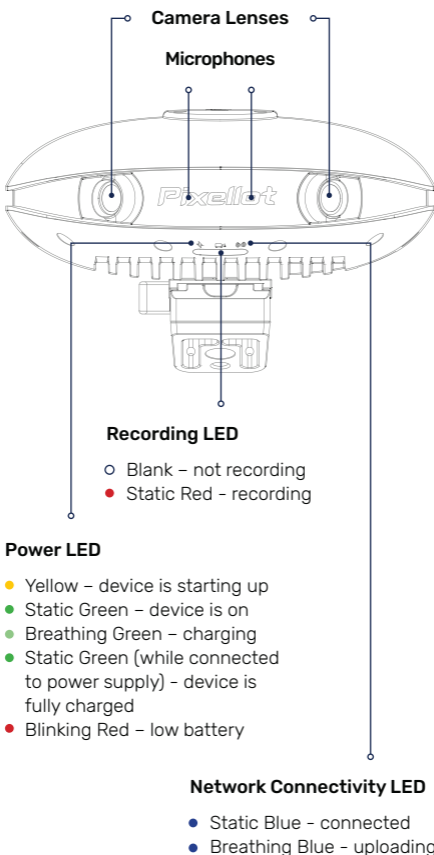


View & set the camera's settings



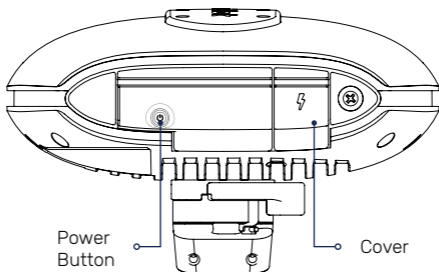
PIXELLOT AIR CAMERA MAP

Front View

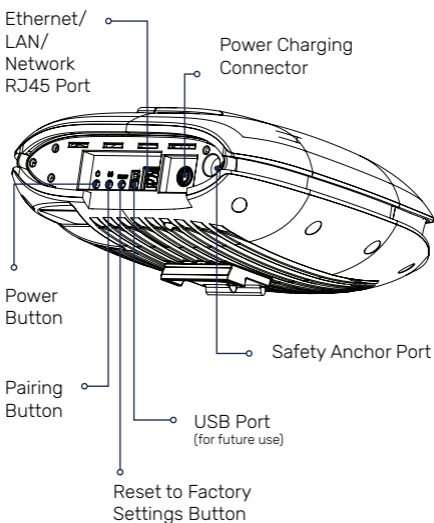




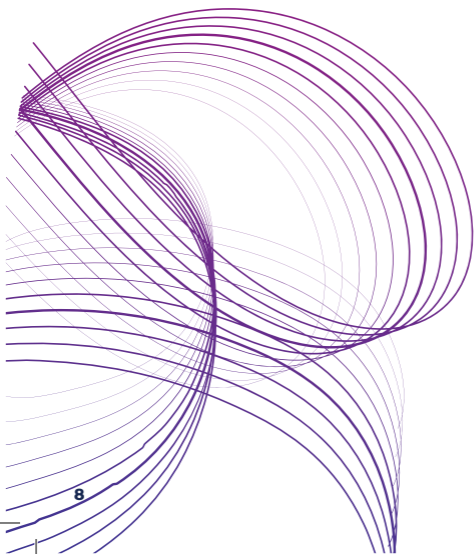
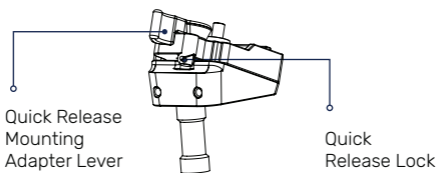
Back View



Back View (underneath cover)



Quick Release Angle Mounting Adapter



UNBOXING



Pixellot Camera



Power Supply



Cleaning Cloth



Ethernet Cable



Safety Cable



Quick Release Angle
Mounting Adapter

Preparation for First Use



Remove the camera and its accessories from the case.



Connect the power supply to the camera's charging port and to the AC power outlet.



Turn on the Air camera by pressing the power button on the back panel, for a few seconds.



Wait up to 2 minutes until the camera's front Power LED turns on with a breathing green light, showing that it is currently charging.



Connect the camera to your Internet network, using a standard ethernet cable. The Network Connectivity LED should turn blue.



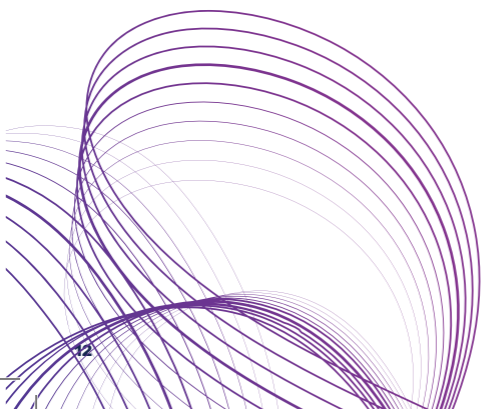
Let the device fully charge while connected to the network. Charge it for a few hours till it is fully charged.

To Pair to Your Mobile

- 1 Download and install the Pixellot Control App.
- 2 Login with your team's admin Pixellot credentials.
- 3 Verify that your Pixellot camera is turned on.
- 4 Follow screen instructions for initial pairing to your Pixellot camera:



Make sure
to press OK



Try Out Your Air at Home

01

Turn on the Pixellot Camera by pressing the power button for a few seconds.

02

Wait until you see the front Power LED turn green.

03

Connect to your camera from the Pixellot control app.

04

Verify your recording settings



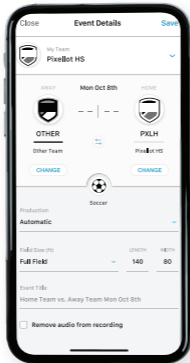
05

Record a short one minute test footage.



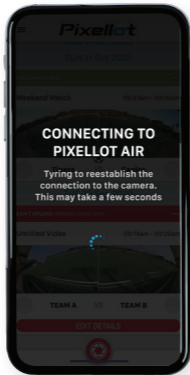
06

Enter event details for the recorded footage.



07

You may be requested to re-connect your mobile device to the Internet network and/or connect to the camera's Wi-Fi.

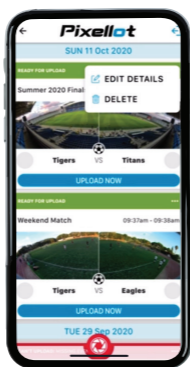


08

The test event you just recorded should now be displayed in the events list page of the App.

09

Delete the test event from the list by tapping the "..." options of the specific event.



Get Acquainted

The Pixellot Air Camera comes with the following mounting accessories:



**Quick release angle
mounting adapter**



Mounting safety cord

If the angle mounting adapter is connected to the camera, pull the quick release adapter's lever to release it.



Connect the angle mounting adapter to your mast's mounting point.



To mount the camera, you need to slide the camera onto the mounting plate.





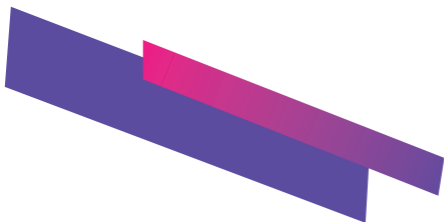
To secure the camera to the mounting gear, hook the safety cable to the mounting gear on one side and plug it into the Safety Anchor Port on the back right-hand side of the camera.



1



2





3

To release, pull the quick release adapter's lever



4

To unmount the Camera, first release the safety cord by pressing on its knot's central button and pull the lever of the quick release adapter until it locks in place and the camera is released.

Before heading to the venue

Make sure that:



The camera is charged and the device is switched off.



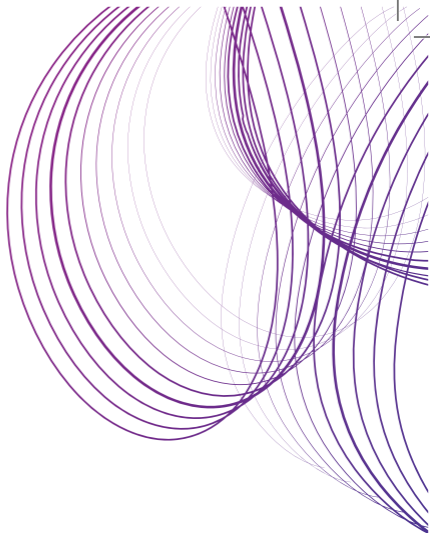
You have enough recording time.



You have taken all your gear (camera & mounting equipment / mast).



Watch our videos



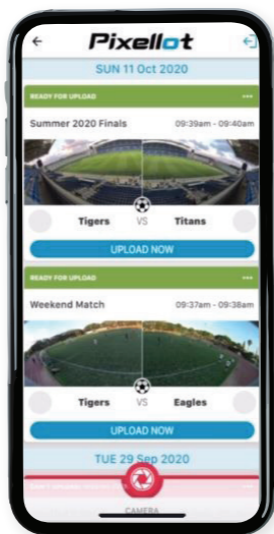
SECTION 2: UPLOADING AFTER THE GAME



UPLOADING YOUR GAME

To Upload Your Game

- 1 Turn on the camera.
Connect the camera to the supplied power adapter and to the AC power outlet on the wall.
- 2
- 3 Connect the camera to your network using an ethernet cable.
- 4 Using the Pixellot Control App, view the camera's events list:



If needed, complete the event details, tap **UPLOAD NOW** to start uploading.



Note:

Do not disconnect the camera from both power and ethernet cables until the upload is complete. You will know that the upload is complete via the app or when the blue connectivity LED stops blinking.

VIEWING YOUR VIDEOS



To View Your Recorded Videos



Once the video is available, you will receive a link to view it on our mobile friendly Web-Viewer page.



02

You and your team members can watch it on your Pixellot webviewer page and Pixellot You mobile app.

PIXELLOT YOU APP



Sharing Your Videos & Game Highlights

Your team's personal viewing app



Watch All Your Team's Games in one place once they're uploaded



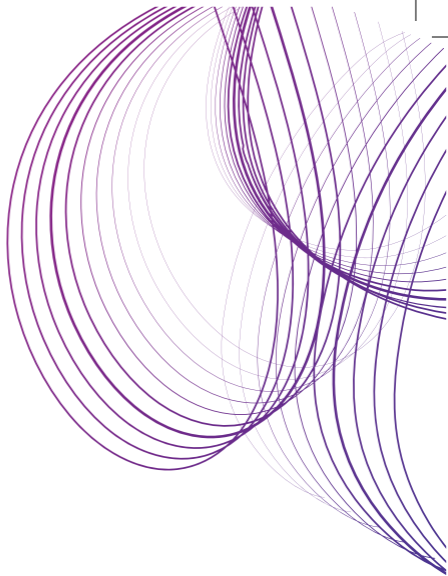
Share Highlights with family, friends, parents or other team followers either personally or on the social networks



Create Clips to share specific moments with your team or to create personal highlights



Mark & Save important moments in the game with labeled tags for quick reference when reviewing the game



**Download
YOU app**







**Watch our
videos**



Need to connect with our support team?



Send us an email

you.support@pixellot.tv



Visit our website

you.pixellot.tv

Pixellot
AUTOMATIC PRODUCTION

Copyright © Pixellot 2021, All Rights Reserved